

# Apparatus: Extended Guide

In this second tutorial, we will talk about using the Apparatus plugin inside Unreal Engine 5 in a deep. We will create a full fireman game. The goal of the player is to put out at least half of all the wood blocks until his house wouldn't burn out. We will add music and other features like a menu, and finally, we will publish our mobile game on Google Play!

Just before going any further, make sure you have read (or saw) our [previous tutorial](#).

## Technical task

Before creating a new game, a developer should clearly understand the features he's going to add to the product and the workload he's going to implement. We will create a list of all our objectives, so everyone will know the purposes of the tutorial, but we will not do anything else that is not included in the list (to save our time):

- Create a menu with 3 buttons: **levels**, **settings** and **quit**. A button click should navigate the player to the according widget (except for **quit**, which must shut the game down).
- Settings widget must contain 3 sliders:
  - the volume of music,
  - the field of view,
  - the controller sensitivity.
  - Plus the **back** button that will navigate the player back to the main menu.
- In the **levels** widget, there must be 3 different levels. We will not save information about completed levels, so at the game first start, the player could select any level he (or she) wants. Click on the level button should immediately start a level.
  - Plus the **back** button that will navigate the player back to the main menu.
- The level consists of different things, logics and mechanics:
  - The player can move around by using a joystick. Also, there are buttons like **jump** and **snuff out**.
  - The level is just a grass plain with a huge fence around and a wood building constructed with blocks at the center of the area.
  - The player is spawned in the building on the most top floor. While the player is spawned, a random wood block is lighted it up.
  - A Burning block causes nearby blocks to light up after several seconds of permanent neighborhood. Here some fire particles should be used.
  - After several seconds of burning, the block will be destroyed, which could cause the building to collapse.
  - The player should go through the building, find the epicenter of the fire and snuff it out.
  - If a certain percent of all wood blocks are destroyed (say, 50%), then the level is failed, - we should show the fail widget to the player and navigate him (her) back to the main menu.
  - The player should use the fire extinguisher to stop the fire, after several seconds of the using fire extinguisher on the block, the block will stop burning.
  - If all blocks have stopped burning, then the player completed the level. Show the win-widget to the player and navigate him (her) back to the main menu.
- Music and sound design:
  - There should be 1 main menu music, and one game (level) music.

- When the sound of fire kicks in (the player is close to the fire), then the level music is disabled (until the level end).
- There must be sound space, so the player can find the fire by listening to sounds.
- Finally, publish the game as a beta version on Google play.

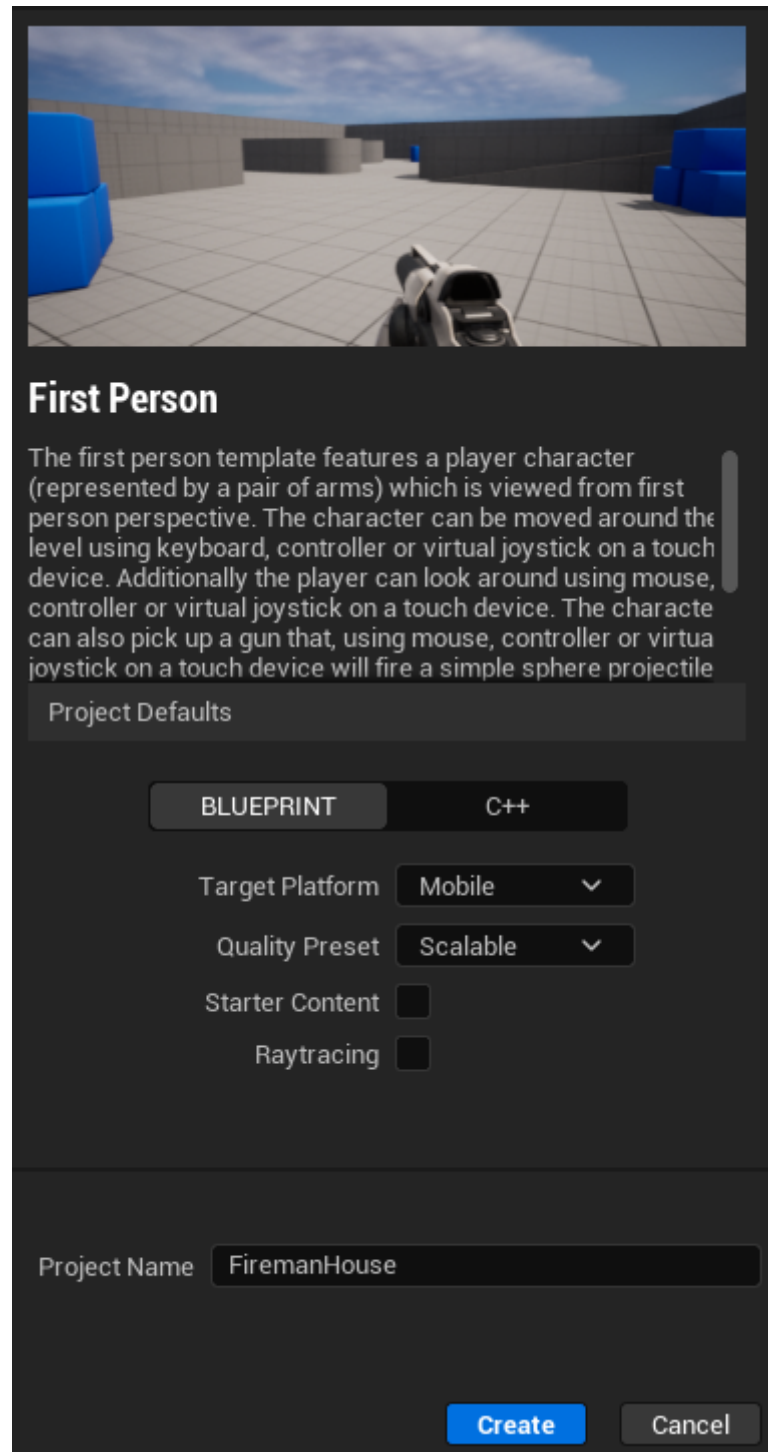
## Wood block parameters

- **Ignition factor** - initially is set to 0.0. Every tick the block is contacted with the burning one, this counter will be increased. After the parameter has reached the 1.0 value, the block become burning.
- **Fire health** - initially is set to 100.0. While the block is burning, this value is decreased, so, when the counter reaches the 0.0 value, the block is destroyed. When there become many destroyed blocks, the level will fail (as described earlier).
- **Extinguishing counter** - the player can affect this parameter by using the fire extinguisher only when the **Ignition factor** is greater than 0 (so the player can snuff out only blocks that are going to burn). This value is initially set to 0.0. Every tick the user use the fire extinguisher on the block, this value is increased, so, when it reaches the 100 value, the block is no more burning (i.e. if it was burning, then it stops, if it was not, then it will never start).

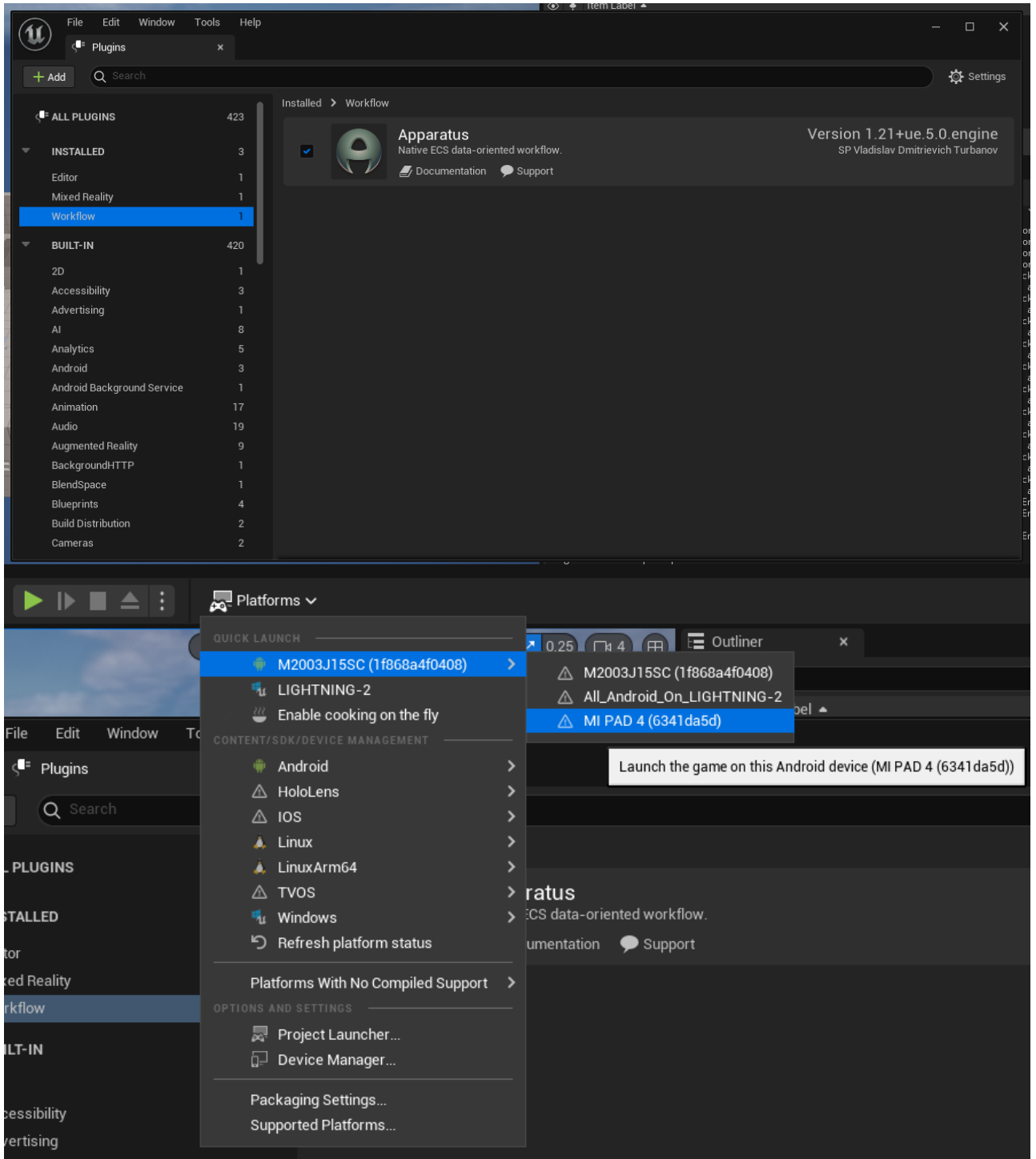
## Project initialization


Before doing anything else, make sure you have Apparatus installed on your UE 5 (see [previous tutorial](#) for details). In this tutorial, we will use UE version 5.0.2, but you can actually use any 5.0+ version you already have, because they do not have significant differences.

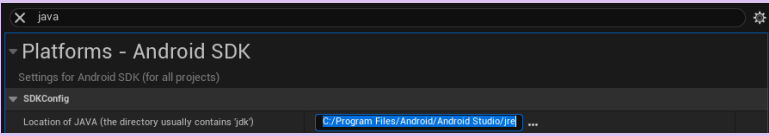
1. Let's [create a New Project](#). Click the "Games" section on the left menu in Unreal Project browser. Select "FirstPerson" template, target platform should be "mobile", let's set the new project quality to "scalable", **disable** "Started content" and name the new project anything you want, but we will use "FiremanHouse", like this:



2. After project creation, **enable Apparatus plugin** (via "Edit" → "Plugins" → "Installed" → "Workflow" → "Apparatus", then restart Engine as it claims to). If you want to use your android phone for project test, plug it to the computer, enable USB debug, make sure that you have installed [Android studio](http://turbanov.ru/wiki/). Go to platforms and under the section "Quick launch" select the device you want the game to run on:



 If you got the `java.lang.NoClassDefFoundError: Could not initialize class org.codehaus.groovy.vmplugin.v7.Java7` error while launching the game on the device, then just go to the project settings and manually select the location of JAVA setting to the location of JDK that was installed with your Android Studio (in our case it is `C:/Program Files/Android/Android Studio/jre`).



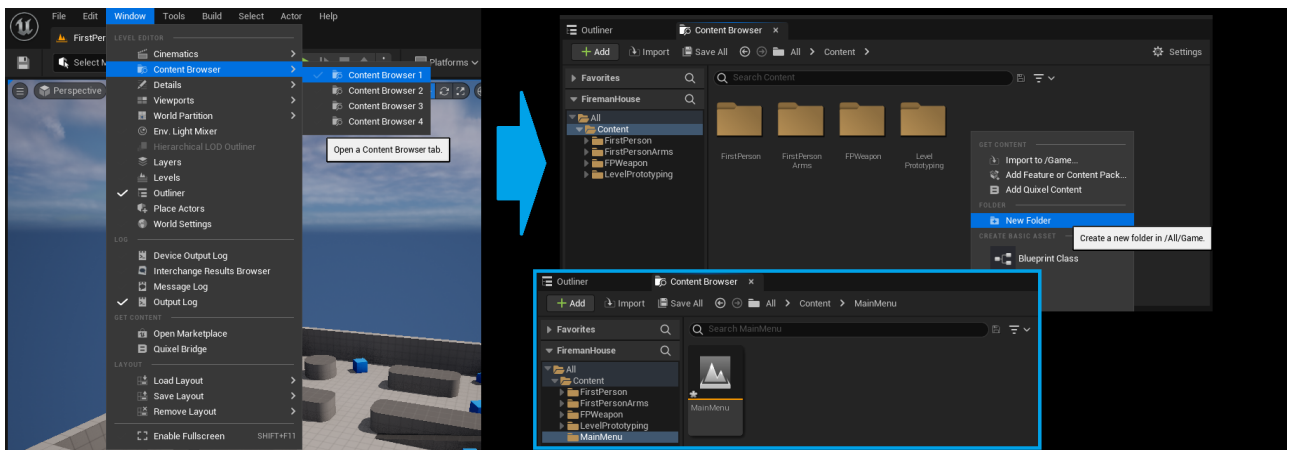
## Creating background for main menu UI

Ok, the next step we need to implement is, obviously, the UI for players. Basically, we need to create the main menu, as described above. For the menu, we need several features:

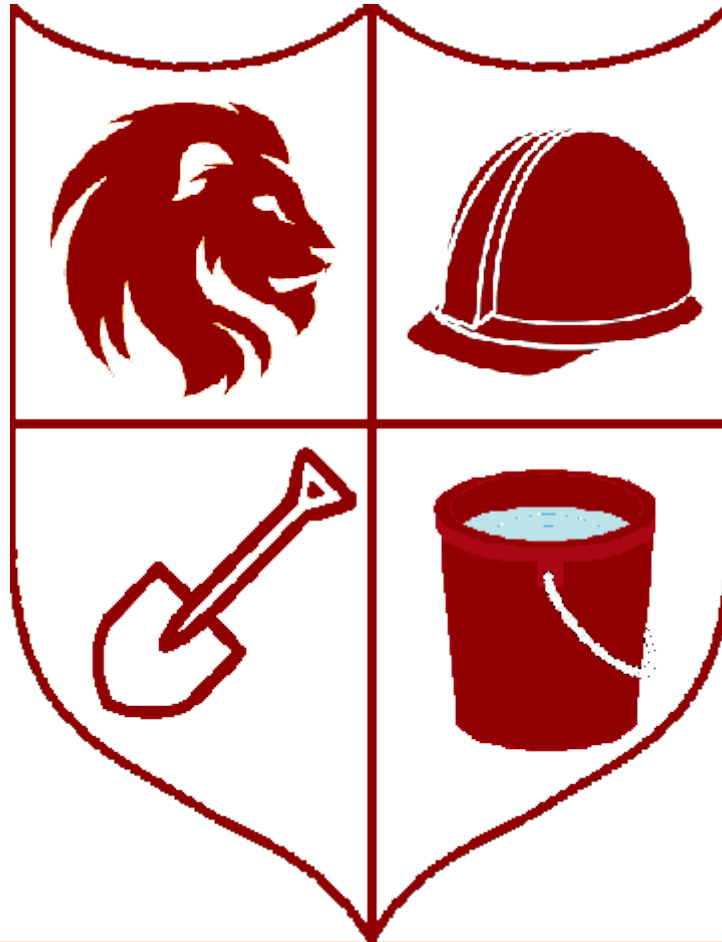
1. Logo of our game.
2. The level for main menu. (actually, the background for the UI)
3. HUD class object that will manage our widgets via Mechanism.
4. 3 widget classes: for main menu itself, for settings and for levels.
5. Settings must be stored across different levels, what can be achieved by using the Game Instance class. So we need to create one.

In this paragraph we will complete tasks **1** and **2**. Let's pour in the development process by completing these several steps:

1. Firstly, let's pin the Content Browser window and create a new level called Main Menu in the new folder with the same name.

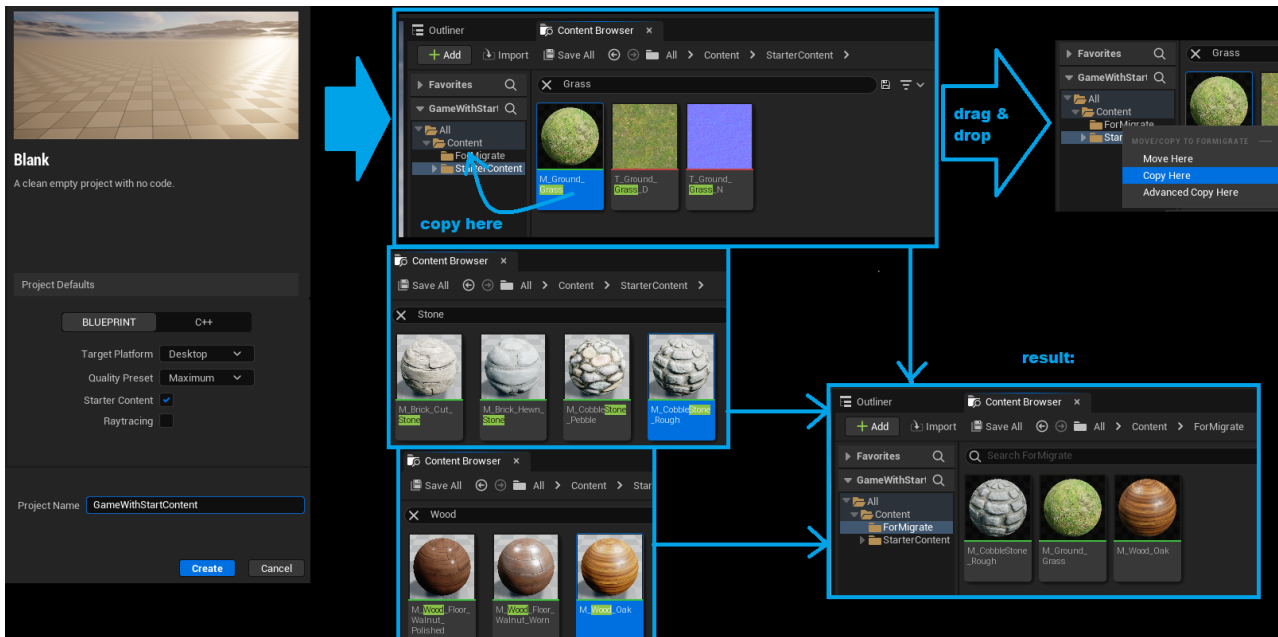


2. Save created item and open it by double-click. If the Engine has asked you to select the content to save in a pop-up window, just click Save selected.
3. The next thing we are going to do in a new level is to create a simple stone wall with the logo of our game. Of course, we will have to add some lighting to the scene. So, open any bitmap picture editor you have installed and create a simple logo for fireman organization, like this:

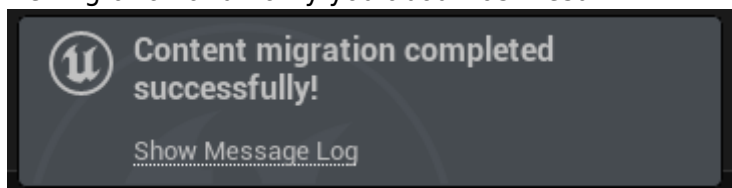


The output file extension should be .png or .jpg (not .svg).

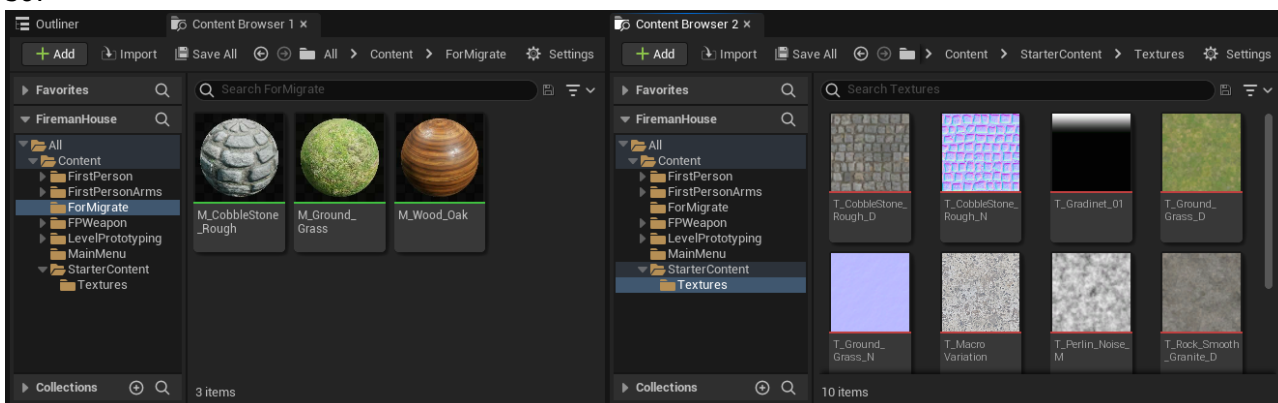
4. Then, we need a material of wood, of stone and of grass. These materials are available in a Starter Content in every new Unreal Project. But we have disabled Starter Content, because its size is too big for a mobile game. So, to access the materials, we need to [migrate](#) these assets from another UE project, that has Started Content included. So, open your another UE project via UE Project Browser that has Starter Content. If you do not have any other UE projects with Starter Content, then just create a new one. We need to migrate several assets, that means, we need to select them what is not quite comfortable while searching. So, create a new folder called ForMigrate in the root folder of your project (we will delete it after this step). After that, open Starter Content folder. Search for each material in turn, drag & drop it to the ForMigrate folder and select Copy. The process should be like this:



5. Now go to the ForMigrate folder and select all 3 materials. Right mouse button click → “Asset Actions” → “Migrate...”. The Engine will show you the Asset Report window, so you can find the other items (textures etc.) that will be migrated with the assets. Just click OK button. Then a new window will be opened, called Choose a destination Content folder. Now we need to select a UE project that we need to migrate our assets to. To do it, you need to find a location of the tutorial project and navigate into its content folder. In our case, the correct location should be C:\Users\\Documents\Unreal Projects\FiremanHouse\Content. Select this folder in your operating system file explorer. Engine will perform the migration and notify you about task result.





6. Delete the ForMigrate folder in the current project and navigate back to the tutorial project. In the “All → Content” folder, there must appear ForMigrate and Starter Content folders. In the first one you should see the materials, but in the second one should appear textures. Like so:



7. Nice, we have just added some materials in our game, so it is time to create a first scene for main menu. Before that, let’s select levels the Editor should use as a first game scenes. Go to the project settings and under the Maps & modes section find Default Maps options. Make Editor Startup Map and Game Default Map to be MainMenu. Rename folder ForMigrate to BasicMaterials. Run **Ctrl+Shift+S** to save the project settings.


8. Open the MainMenu map. Open window **Place actors** via “Window” → “Level editor” section → “Place actors”. In the panel, select Shapes kit, so you can access different basic shapes like

Cube, Sphere or Cone. Drag and drop Cube shape to the empty level. As there are no any lighting in the map, you will not be able to see it in the viewport (because everything is just dark). In the Place actors window select Lights kit and add Spot Light to the map. You can use  Outliner window to select added cube or light source and a  Details panel to manually set the location. We will use:

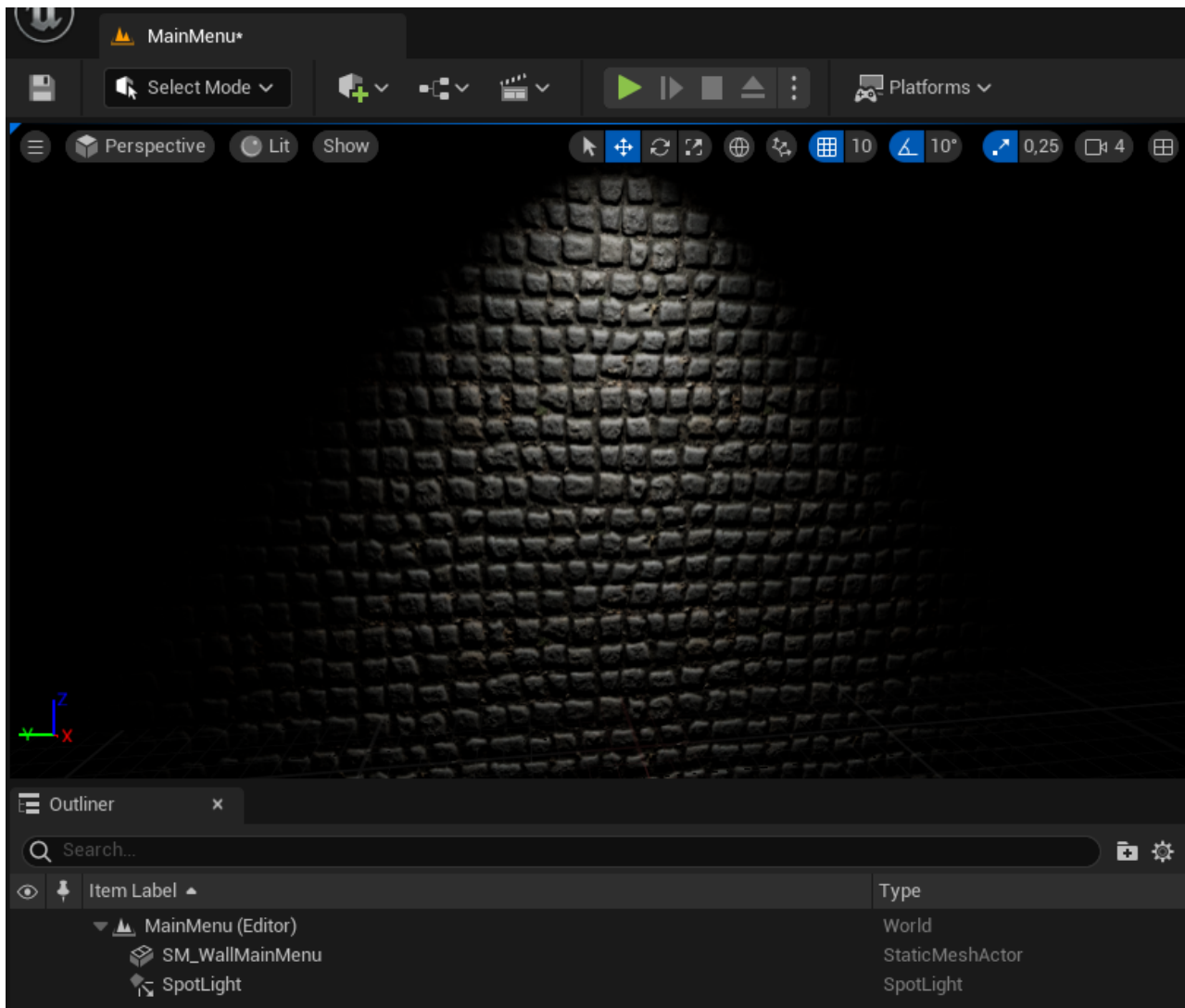
1. Cube relative location: (X=-70.000000,Y=0.000000,Z=0.000000)
2. Cube relative scale : (X=0.500000,Y=9.000000,Z=6.250000)
3. SpotLight absolute location: (X=10.000000,Y=0.000000,Z=283.000000)
4. SpotLight absolute rotation:  
(Pitch=-90.000000,Yaw=-107.002370,Roll=107.002370)
5. You can copy and paste this values from the tutorial text to your editor, like it was described in the [first tutorial](#) (see step 8)
9. Drag and drop the M\_CobbleStone\_Rough material from the BasicMaterials folder in the Content Browser to the cube in the viewport. As you can see, the scale of the texture is a little huge. We will solve that by creating a new static mesh via Engine brush editing mode for geometry. So, firstly, in the viewport click Lit to select other view mode - Unlit. This will help you to see all objects on the map even without lighting. Then in the Place actors window select Geometry kit and add a Box to the map.



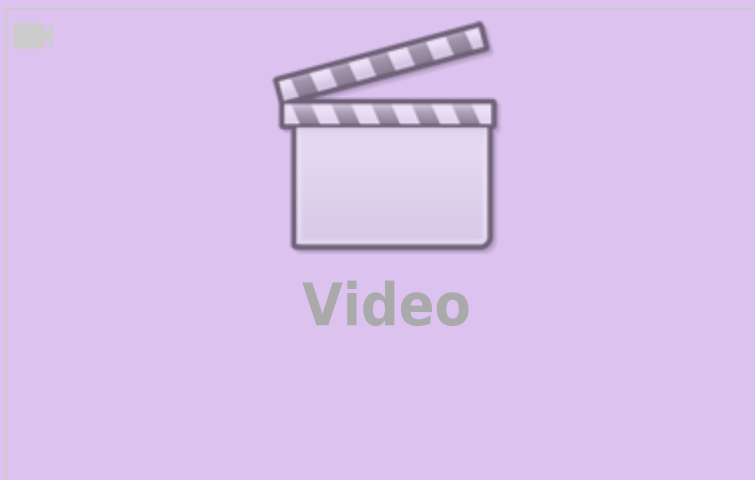
Note: if you has selected the correct material in the Content browser before placing the box, the material will be applied to the mesh.

In the up menu in level editor change Select Mode to the  Brush Editing Mode. Then select box facets and move them to fit the geometry box to the scaled cube we have placed before. You can use details panel to manually set the location of the geometry box (just copy it from the Cube location data). After you fit the cube, delete the last one, but the geometry mesh should be converted to the static mesh via "Details Panel" → "Brush settings" → "Advanced" → Create static mesh. The Editor will ask you the folder for the new asset and the name for it. Just select Content folder in the project, but we will name the new static mesh as SM\_WallMainMenu. Run **Ctrl+Shift+S** to save all changes. Go back to the Lit view mode and Select Mode in your viewport to check for result.





If you have any troubles in this step, just check our short video that explain, how to create a new static mesh via UE geometry.



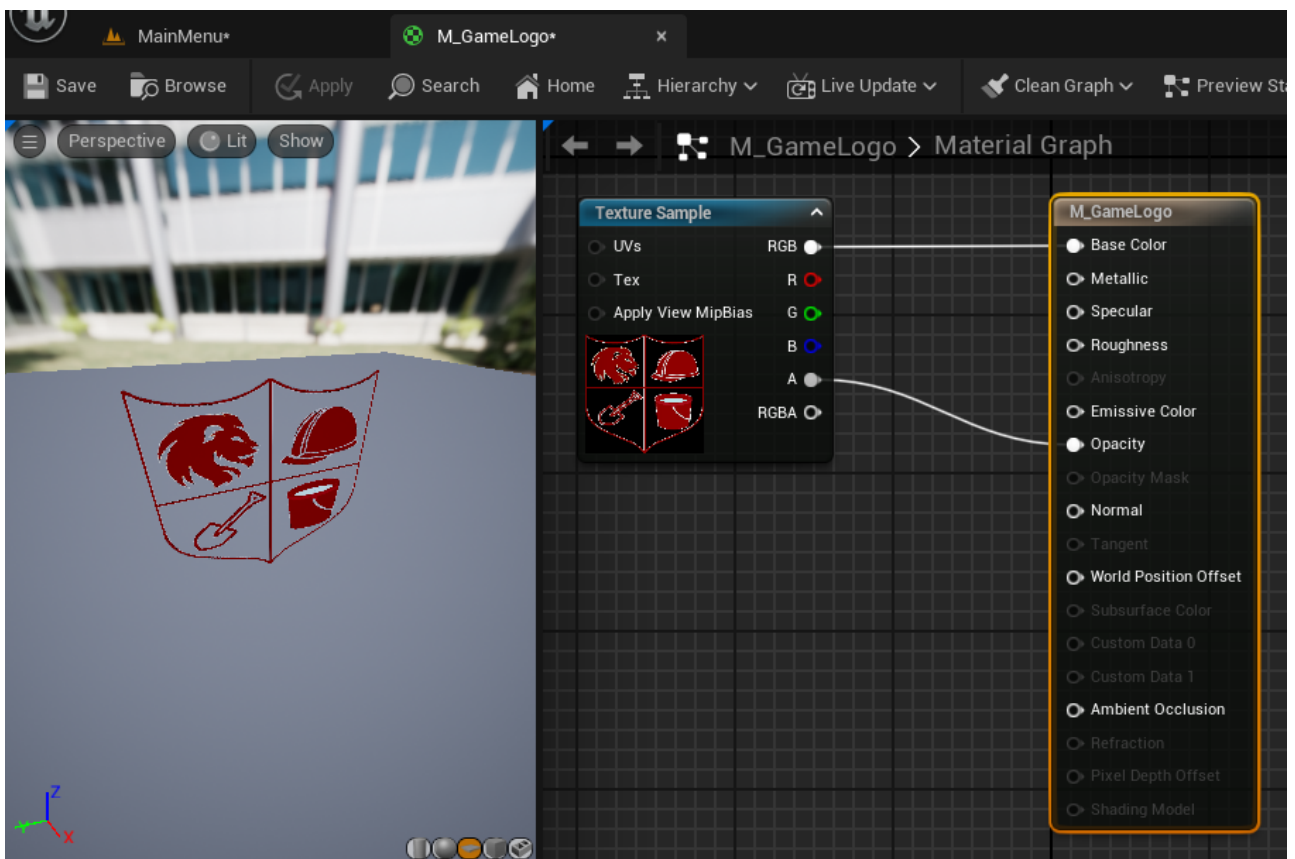
10. The SM\_WallMainMenu will be used only in the main menu, so let's move it to the MainMenu folder.





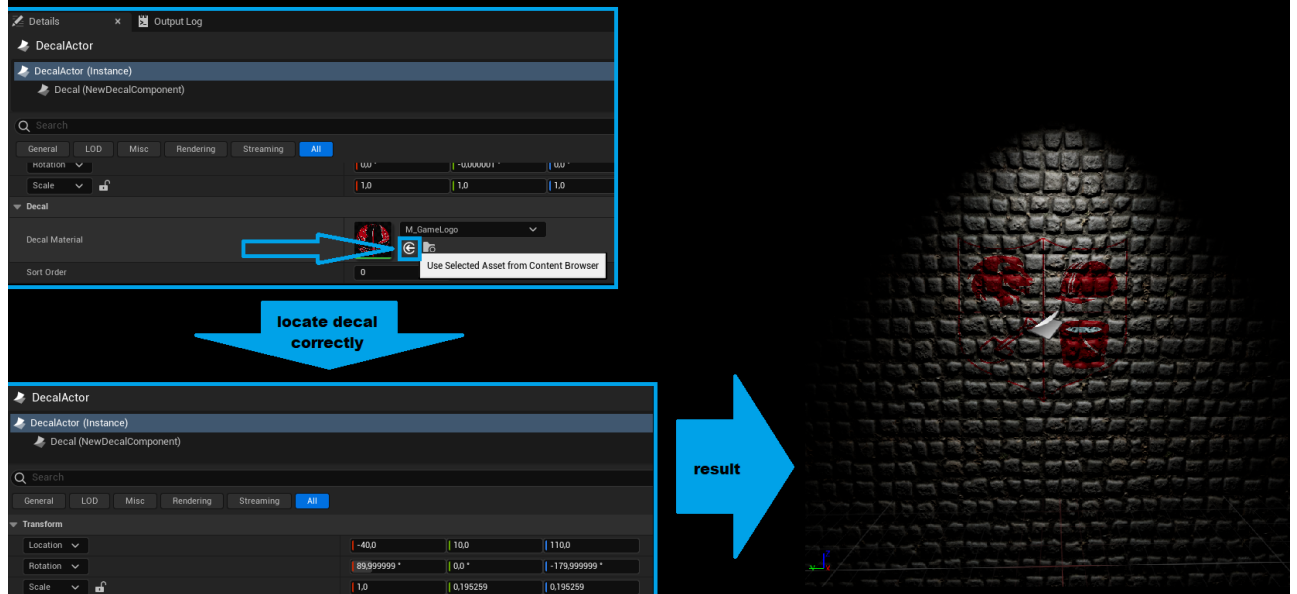
When you move assets from different folders, Unreal Engine will generate so-called *redirectors*. While it is normal for them to appear in development build, you should avoid their existence in production build, that means, you should fix them. To find out all the redirectors in the project, go to the root (“All”) folder in the Content Browser and in [filters](#) select “Miscellaneous” → “Redirector”. After that you will be able to see redirectors in your project. Select them all, perform right mouse button click and select “Fix up”. You should fix up all redirectors before creating a product, as it also specified in [Marketplace guidelines](#).

Perfect, now we need to add game logo to the wall. To do so, open the operating system file browser, navigate to the path, where the logo image is stored, and drag and drop the image file from the file browser to the Content Browser inside Unreal Engine to the MainMenu folder. Rename added texture to T\_GameLogo. Go to Place Actors window and search for Decal Actor. Drag and drop it to the level scene. Next, we have to create a material for it. Navigate back to the Content Browser and perform right mouse button click on the logo texture. Select “Create Material”. Name it M\_GameLogo. Double click on new saved asset to open material editor. Click on the result node of the material and in details panel select [material domain](#) to the Deferred Decal. Make [Blend Mode](#) to be Translucent. Connect RGB output of the texture to the Base Color of the result node, but the A output (alpha-channel) to the Opacity parameter, as so:



11. Save and apply the material. Go to the Content Browser and select the material M\_GameLogo, then select the decal actor on the map, go to its details panel and under the Decal material option click the Use selected asset from Content Browser button. Locate the decal

actor correctly, so it will be placed on the wall, like this:



1. Location: (X=-40.000000,Y=10.000000,Z=110.000000)
2. Rotation: (Pitch=0.000000,Yaw=-179.999999,Roll=89.999999)
3. Scale: (X=1.000000,Y=0.195259,Z=0.195259)

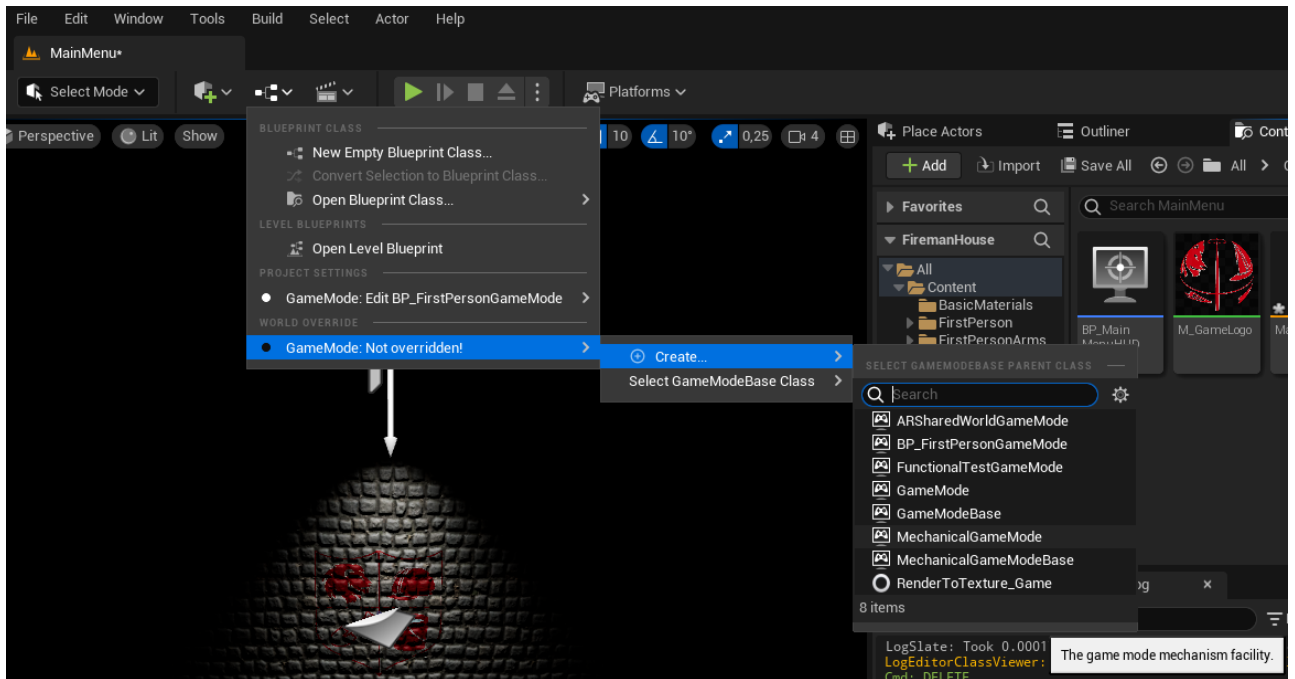
12. Now we have a complete background for the UI. Move the viewport view as needed, because we are going to create a camera. When you found a perfect view for the background, click on the upper-left button with 3 sticks in the viewport and select "Create Camera here" → "CameraActor". In the details panel search for activate options and for Auto Activate for Player select Player 0. Here we will also enable Auto Activate in the Activation section.

1. Camera Location: (X=325.000000,Y=0.000000,Z=140.000000)
2. Camera Rotation: (Pitch=-5.000000,Yaw=-180.000000,Roll=0.000000)

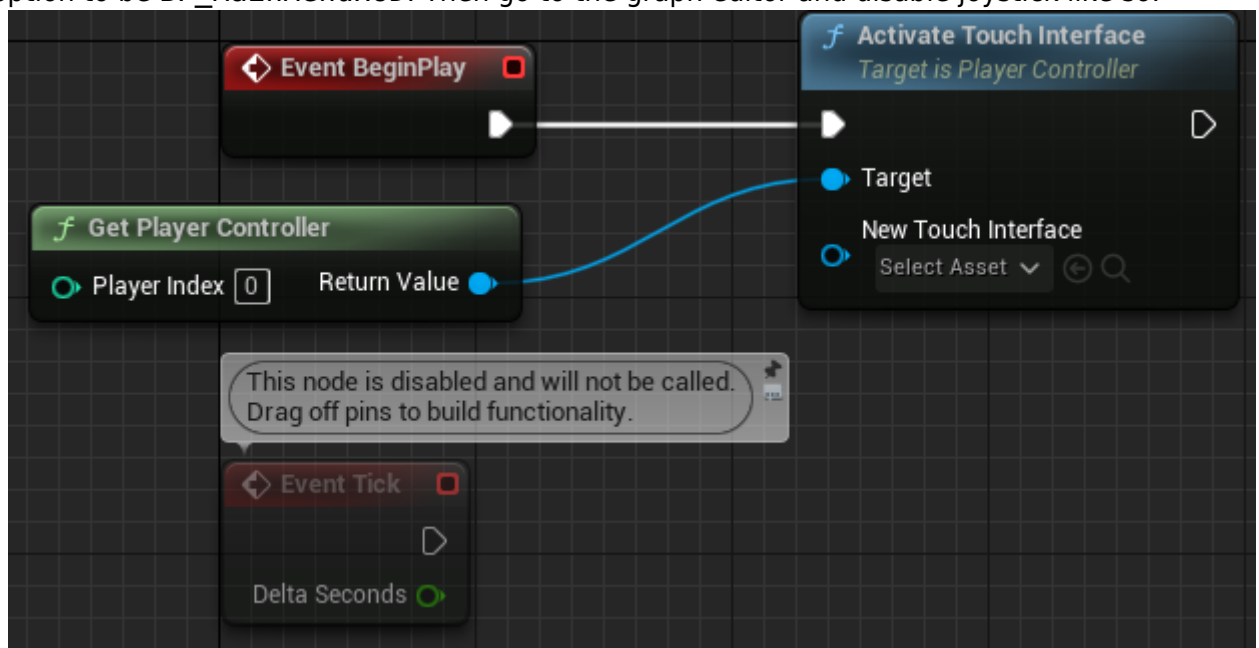
## UI basic logic

Here we will solve other steps that were introduced in the paragraph above. We need to create 3 different widgets and animations for them. All the widget manipulation will be done via special HUD class. So:

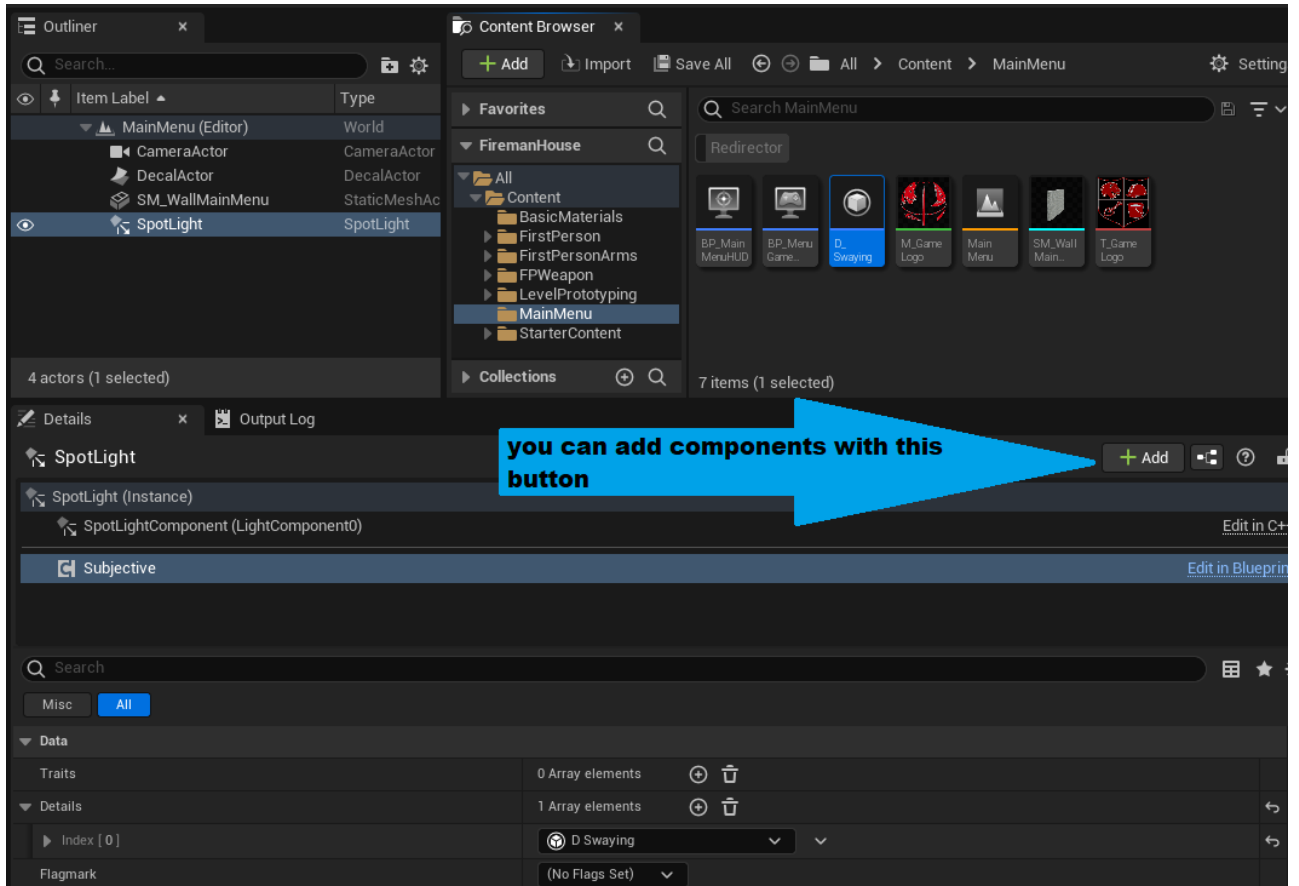
1. Go to MainMenu folder in the Content Browser and **create** a new HUD class (derived from HUD). Name it BP\_MainMenuHUD. Click on the diagram-like button on the up Editor menu, under "World Override" go to the "Game Mode: Not overridden!" option, select "Create" → "MechanicalGameMode".




2. In the pop-up window name new created blueprint like BP\_MenuGameMode and place it under MainMenu folder. In the opened BP Editor navigate to [details panel](#) and make HUD Class option to be BP\_MainMenuHUD. Then go to the graph editor and disable joystick like so:




3. Now we need to add animation of light source swaying. We will perform this logic in the GameMode BP using ECS. Go to the level editor, select SpotLight object and add a Subjective Actor component to it via details panel. Create a new detail BP called D\_Swaying in the MainMenu folder. In the details panel of recently added subjective component add this detail to the spotlight.

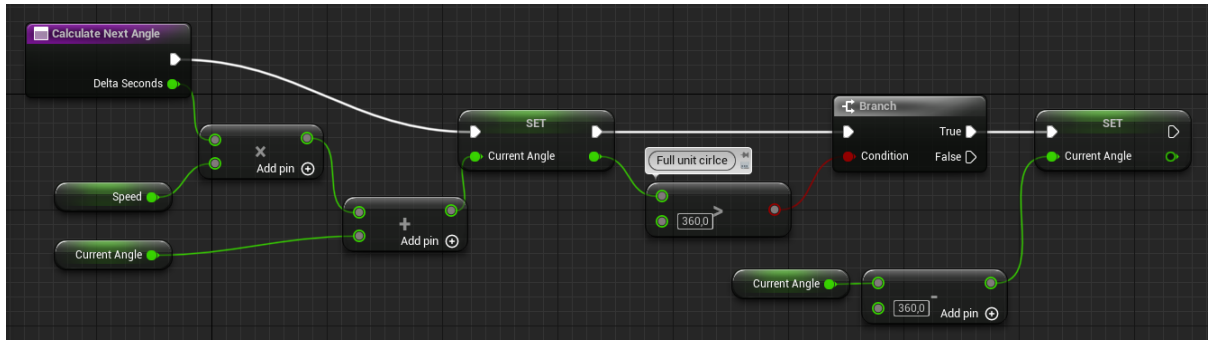


4. Next, select SpotLight actor and make it  **moveable** via details panel. Go to the newly added detail BP editor and add some variables:
  1. Original of type "Rotator" with "Instance editable" flag enabled.
  2. Amplitude of type "float" with "Instance editable" flag enabled.
  3. Speed of type "float" with "Instance editable" flag enabled.
  4. CurrentAngle of type "float" (without "Instance editable").

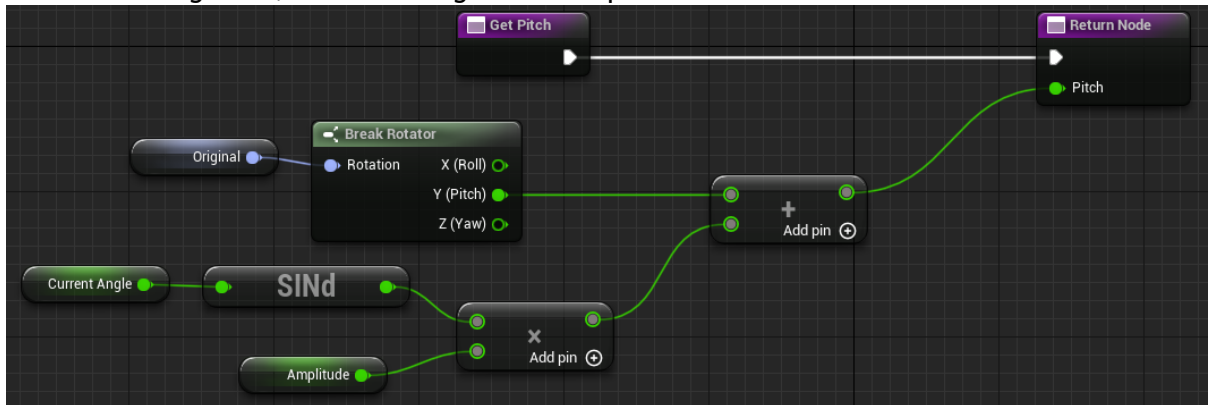


You can add description to every new variable. Original - is the premier rotate parameter of the spotlight, Amplitude is the maximum angle of which we will rotate the light source, Speed variable define, how fast the swaying would be, but the CurrentAngle is the current state of rotation.

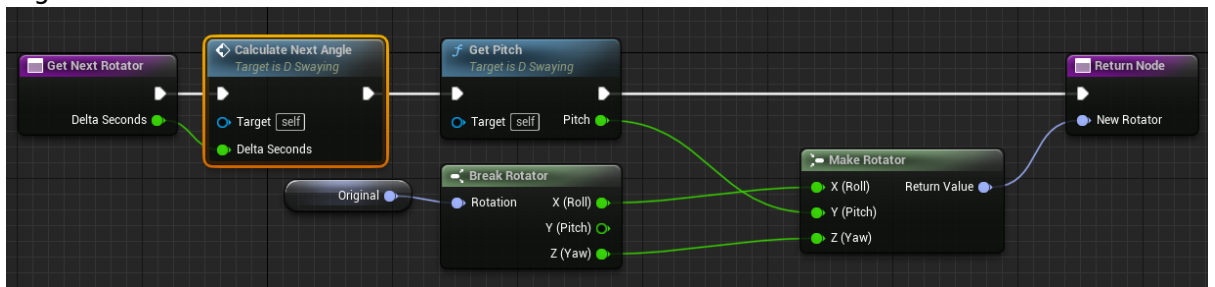
5. We will perform the rotation logic like so: CurrentAngle is the value in degrees of the angle in the unit circle. Every tick this value is increased by Speed parameter multiplied by  **DeltaSeconds**. To get the rotation of each tick, we need to get the Roll and Yaw attributes from the Original structure, but the Pitch parameter will be achieved by the math function:  $\text{Original.Pitch} + \text{Amplitude} * \sin(\text{CurrentAngle})$ . Easy though? So let's create a few simple functions in the detail Blueprint:
  1. Calculate Next Angle: Increase a CurrentAngle value by Speed multiplied by DeltaSeconds. If new value is greater then 360.0, then turn it back to that range. The function must obtain the DeltaSeconds value as float argument.



2. GetPitch: perform the math function above. It will calculate a current pitch based on the values of Original, CurrentAngle and Amplitude:



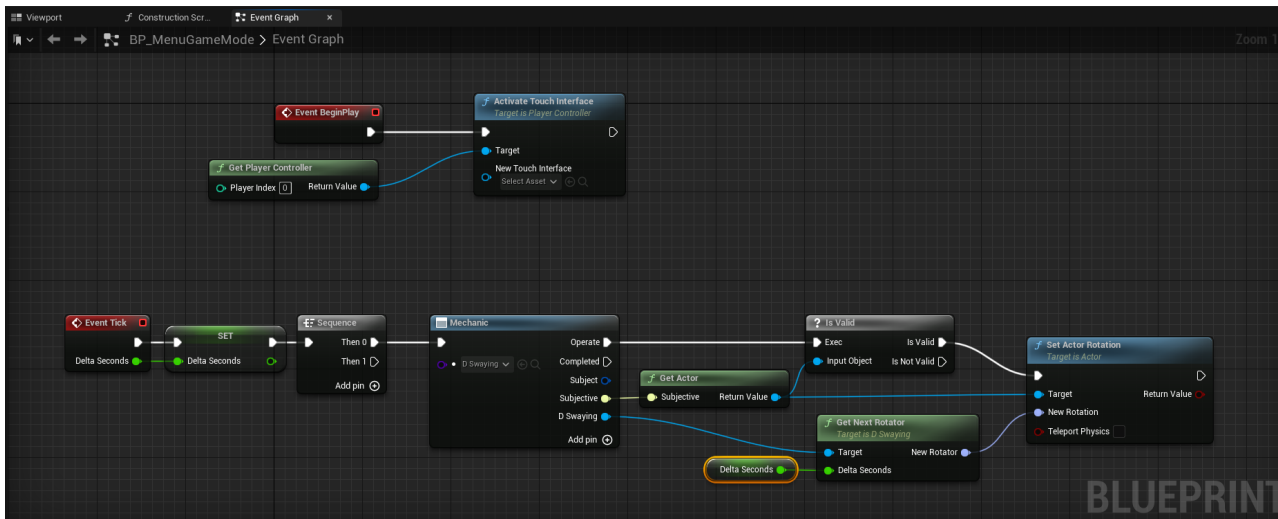
3. GetNextRotator: the pure function that will use previous helpers to return a full rotator that the actor should be set to. Function must obtain the DeltaSeconds value as float argument:




4. Please, make GetPitch and Calculate Next Angle to be private, but the Original variable to be "Blueprint Read Only".

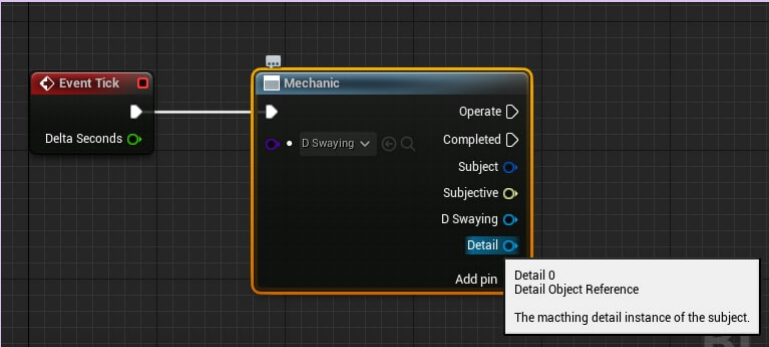
6. Now let's navigate to menu GameMode and in event graph write down our mechanic. To do so, drag pin from Event Tick and create a new node - Sequence. Find out the mechanic BP node and connect them. Click Add pin and in detail field select D\_Swaying. Next, we need to get Actor reference from Subjective interface and if it is valid, then just set its rotation by using SetActorRotation node (Teleport physics flag may be empty). As you remember, the function GetNextRotator require DeltaSeconds. The last value can be accessed from Event Tick event. Promote it to variable, so you will not get spaghetti BP. The full GameMode Blueprint must be like this:






 It is worth to check for the actor validity, because the D\_Swaying detail can be added to non-actor Subjective.

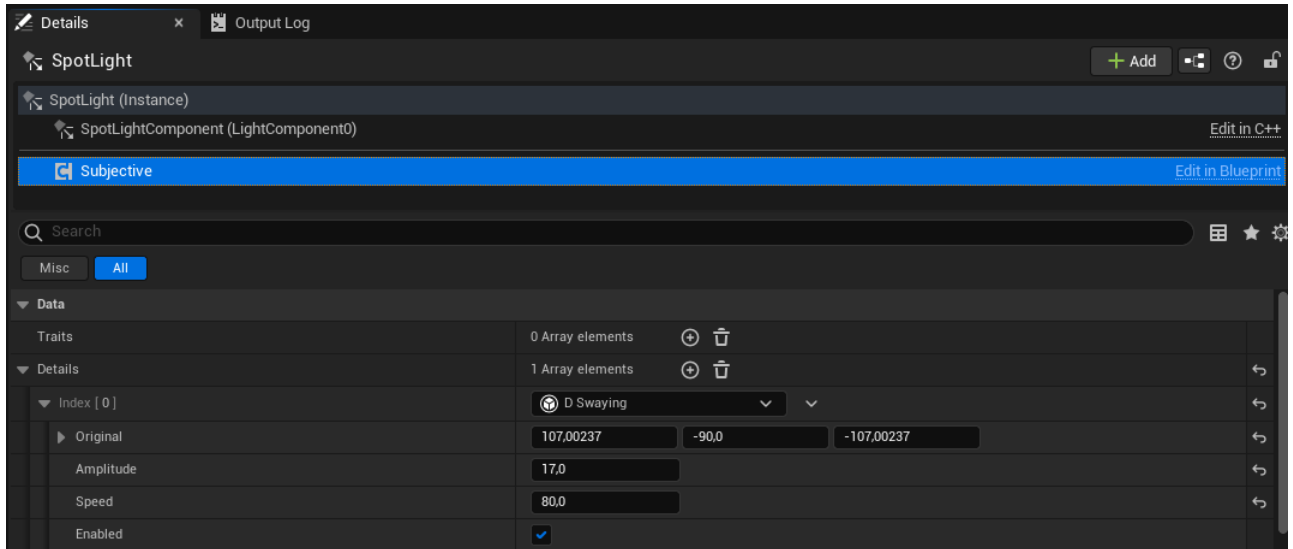
If you have some strange extra pins on the Mechanic node like this:



 The screenshot shows a 'Mechanic' node with a 'Detail' pin. A tooltip is visible over the 'Detail' pin, containing the text: 'Detail 0', 'Detail Object Reference', and 'The matching detail instance of the subject.'

Then try to reload Unreal project.

7. Go to the level editor and set up detail in the SpotLight accurately:



1. Original rotator: (Pitch=-90.000000, Yaw=-107.002370, Roll=107.002370) (The same as SpotLight absolute rotation);
2. Amplitude: 17;
3. Speed: 80.
8. Go to the project settings and in Supported Platforms remove all flags except for Android. **Find** Support Movable Spotlights and Support Movable SpotlightShadows settings and **enable** them both.
9. Launch your game on the Android device (if you have one).

Here are some advices of how to launch the game on the real device, because sometimes this step is just a headache for developers:



1. Before launching on the device, reopen your UE in administrator mode, as it mentioned [here](#).
2. To ensure that your device is connected to the computer, open `cmd` and run `adb devices`. You should see your device and its id in the output. The last command is included in Android Studio [platform-tools](#), that is can be located in the path `C:\Users\<<UserName>\AppData\Local\Android\Sdk\platform-tools`.
3. Go to the [Android Studio SDK manager](#) and install Android 10.0+ (R) (that is API version of 30) or Android 10.0 (Q) (API 29) and uninstall Android API 33.
4. In UE projects settings find Android SDK section and set these settings: SDK API level to 29 and NDK API level to android-29 (as it suggested [here](#)).
5. Go to UE project settings and [configure your project for android](#).
6. You can try other build formats (like Multi or DXT) as it mentioned [here](#).
7. To solve Failed to open descriptor file [error](#), you can try to create a [build and install](#) the





- game with bat-script.
- 8. Other solutions can be found [here](#), but anyway, just try to find your problem in [Google](#) or write your problem to [us](#) directly.
- 9. Check your device API level with [CPU-Z](#) application.

From:

<http://turbanov.ru/wiki/> - **Turbopedia**

Permanent link:

<http://turbanov.ru/wiki/en/toolworks/docs/apparatus/extended-tutorial?rev=1655031138>

Last update: **2022/06/12 10:52**

